

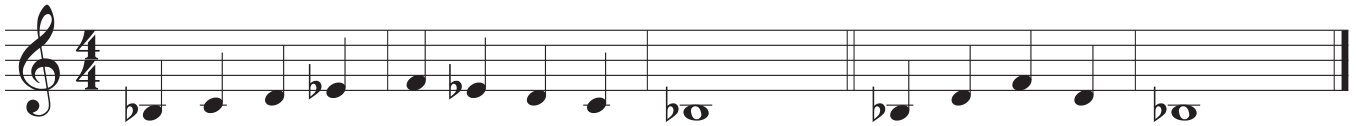
B \flat Major



Skill Check

- Scale
- Exercise 1
- Exercise 2
- Exercise 3
- Scale Memorized

Scale



Technique Exercises

Exercise 1



Exercise 2



Exercise 3



Etudes

Etude 1

Etude 1 is a three-staff musical exercise in 4/4 time, written in B \flat Major. The first staff begins with a treble clef and a 4/4 time signature. The melody consists of quarter and eighth notes, with a key signature of one flat (B \flat). The second staff continues the melody with similar rhythmic patterns. The third staff concludes the piece with a final cadence, marked by a double bar line and repeat dots.

Etude 2

Etude 2 is a three-staff musical exercise in 4/4 time, written in B \flat Major. The first staff begins with a treble clef and a 4/4 time signature. The melody features eighth-note patterns with slurs, indicating a continuous flow. The second and third staves continue this pattern, ending with a final cadence marked by a double bar line and repeat dots.