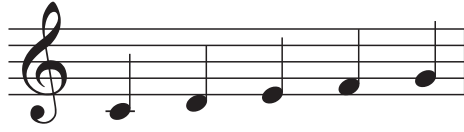


C Major



Note Names →

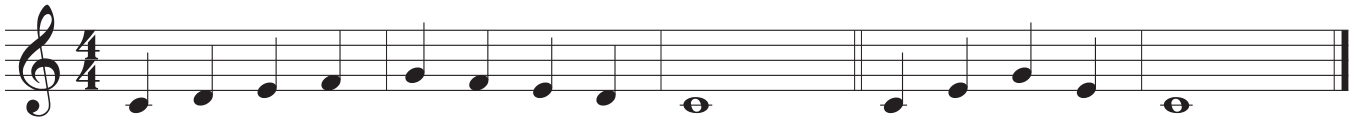


← Fingerings

Skill Check

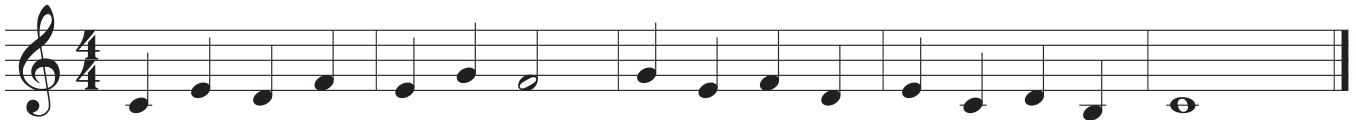
- Scale
- Exercise 1
- Exercise 2
- Exercise 3
- Scale Memorized

Scale



Technique Exercises

Exercise 1



Exercise 2



Exercise 3



Etudes

Etude 1

Etude 1 is a short piece in 4/4 time, written in C major. It consists of three staves of music. The first staff begins with a treble clef and a 4/4 time signature. The melody starts on middle C (C4) and moves stepwise up to G4 (the fifth line of the staff) over the first four measures. In the fifth measure, there is a whole rest. The melody then descends stepwise from G4 back to middle C (C4) over the next four measures. The second staff continues the melody, starting on middle C (C4) and moving stepwise up to G4 (the fifth line) over four measures. In the fifth measure, there is a whole rest. The melody then descends stepwise from G4 back to middle C (C4) over the next four measures. The third staff continues the melody, starting on middle C (C4) and moving stepwise up to G4 (the fifth line) over four measures. In the fifth measure, there is a whole rest. The melody then descends stepwise from G4 back to middle C (C4) over the next four measures, ending with a double bar line.

Etude 2

Etude 2 is a short piece in 4/4 time, written in C major. It consists of three staves of music. The first staff begins with a treble clef and a 4/4 time signature. The melody starts on middle C (C4) and moves stepwise up to G4 (the fifth line of the staff) over the first four measures. In the fifth measure, there is a whole rest. The melody then descends stepwise from G4 back to middle C (C4) over the next four measures. The second staff continues the melody, starting on middle C (C4) and moving stepwise up to G4 (the fifth line) over four measures. In the fifth measure, there is a whole rest. The melody then descends stepwise from G4 back to middle C (C4) over the next four measures. The third staff continues the melody, starting on middle C (C4) and moving stepwise up to G4 (the fifth line) over four measures. In the fifth measure, there is a whole rest. The melody then descends stepwise from G4 back to middle C (C4) over the next four measures, ending with a double bar line.