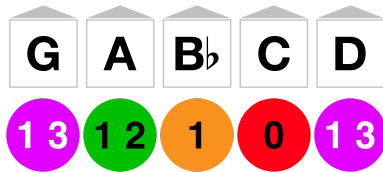


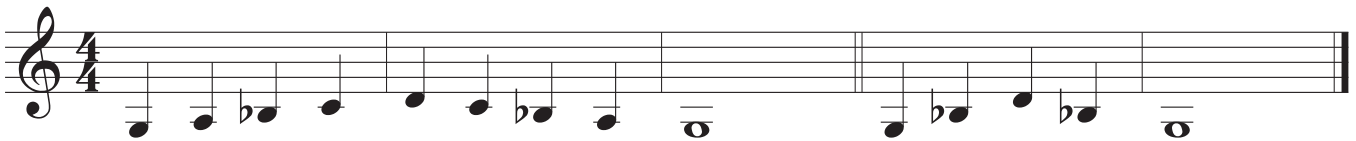
G Minor



Skill Check

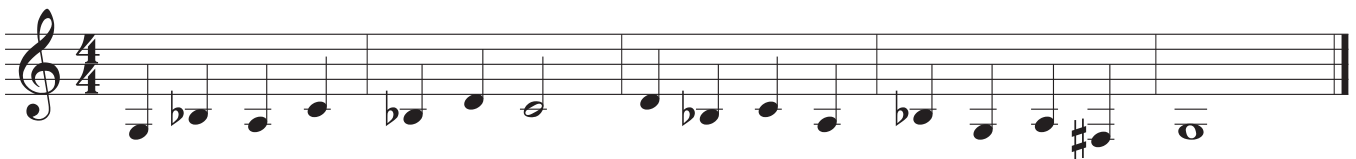
- Scale
- Exercise 1
- Exercise 2
- Exercise 3
- Scale Memorized

Scale

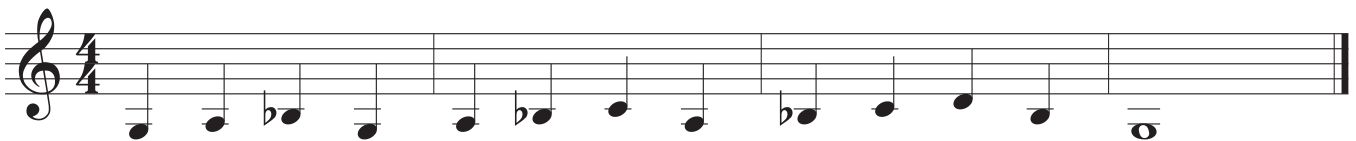


Technique Exercises

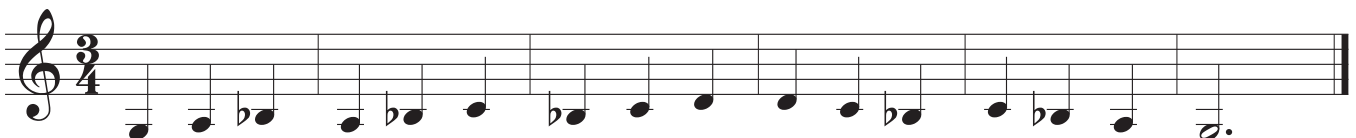
Exercise 1



Exercise 2



Exercise 3



Etudes

Etude 1

Etude 1 is written in G Minor and 4/4 time. It consists of three staves of music. The first staff begins with a treble clef and a 4/4 time signature. The melody starts with a half note G4, followed by a quarter note F4, a quarter note E4, and a quarter note D4, all beamed together. The second staff continues with a quarter note C4, a quarter note B3, a quarter note A3, and a quarter note G3, all beamed together. The third staff concludes with a quarter note F3, a quarter note E3, a quarter note D3, and a final half note G2.

Etude 2

Etude 2 is written in G Minor and 3/4 time. It consists of three staves of music. The first staff begins with a treble clef and a 3/4 time signature. The melody starts with a half note G4, followed by a quarter note F4, and a quarter note E4, all beamed together. The second staff continues with a quarter note D4, a quarter note C4, and a quarter note B3, all beamed together. The third staff concludes with a quarter note A3, a quarter note G3, and a final half note G2.