

# G Minor



Standard Trombone



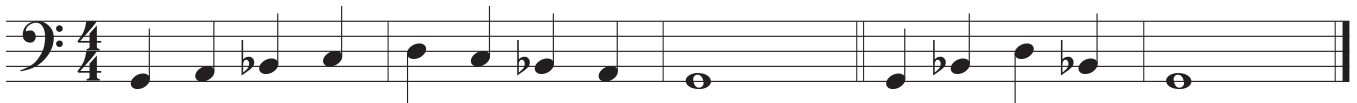
F Attachment



## Skill Check

- Scale
- Exercise 1
- Exercise 2
- Exercise 3
- Scale Memorized

## Scale

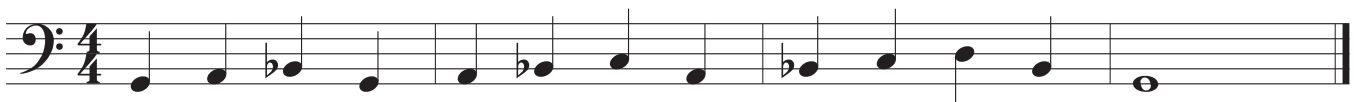


## Technique Exercises

### Exercise 1



### Exercise 2



### Exercise 3



# Etudes

## Etude 1

Etude 1 is written in bass clef with a 4/4 time signature. The piece consists of three lines of music. The first line begins with a slur over the first four notes (B2, Bb2, C3, D3), followed by a quarter rest, then another slur over the next four notes (E3, F3, G3, Ab3), and a quarter rest. The second line starts with a quarter rest, followed by a slur over the first four notes (Bb2, C3, D3, E3), a quarter rest, and a slur over the final four notes (F3, G3, Ab3, Bb2). The third line begins with a slur over the first four notes (Bb2, C3, D3, E3), a quarter rest, and a slur over the final four notes (F3, G3, Ab3, Bb2), ending with a whole note Bb2.

## Etude 2

Etude 2 is written in bass clef with a 3/4 time signature. The piece consists of three lines of music. The first line starts with a slur over the first three notes (B2, Bb2, C3), followed by a quarter rest, a slur over the next three notes (D3, E3, F3), and a quarter rest. The second line begins with a slur over the first three notes (Bb2, C3, D3), a quarter rest, a slur over the next three notes (E3, F3, G3), a quarter rest, and a slur over the final three notes (Ab3, Bb2, C3). The third line starts with a slur over the first three notes (Bb2, C3, D3), a quarter rest, a slur over the next three notes (E3, F3, G3), a quarter rest, a slur over the final three notes (Ab3, Bb2, C3), and ends with a whole note Bb2.