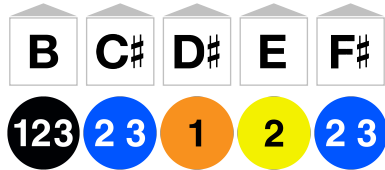


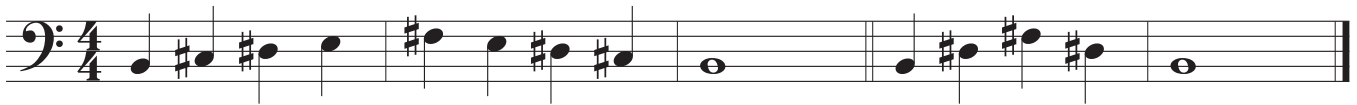
B Major



Skill Check

- Scale
- Exercise 1
- Exercise 2
- Exercise 3
- Scale Memorized

Scale



Technique Exercises

Exercise 1



Exercise 2



Exercise 3



Etudes

Etude 1

Etude 1 is written in bass clef with a 3/4 time signature. The piece consists of three staves of music. The first staff contains the first four measures, the second staff contains the next four measures, and the third staff contains the final four measures. The melody is composed of eighth and quarter notes, with a key signature of one sharp (F#).

Etude 2

Etude 2 is written in bass clef with a 4/4 time signature. The piece consists of three staves of music. The first staff contains the first four measures, the second staff contains the next four measures, and the third staff contains the final four measures. The melody is composed of quarter and eighth notes, with a key signature of one sharp (F#).