

B Major



Skill Check

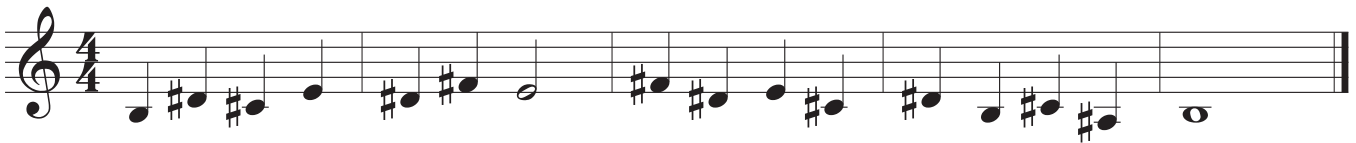
- Scale
- Exercise 1
- Exercise 2
- Exercise 3
- Scale Memorized

Scale



Technique Exercises

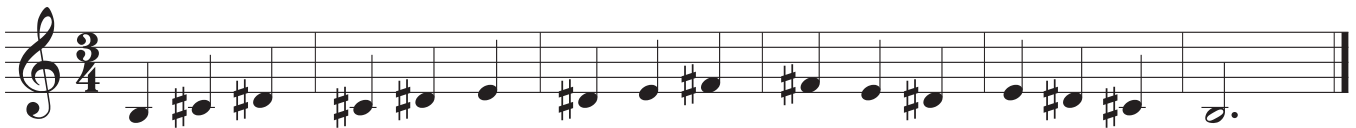
Exercise 1



Exercise 2



Exercise 3



Etudes

Etude 1

Etude 1 is written in 3/4 time and consists of three staves of music. The first staff begins with a treble clef and a 3/4 time signature. The melody consists of eighth and quarter notes, with a key signature of one sharp (F#). The second staff continues the melody with similar rhythmic patterns. The third staff concludes the piece with a final cadence.

Etude 2

Etude 2 is written in 4/4 time and consists of three staves of music. The first staff begins with a treble clef and a 4/4 time signature. The melody features a series of eighth-note pairs beamed together, with a key signature of one sharp (F#). The second staff continues this pattern. The third staff concludes the piece with a final cadence.