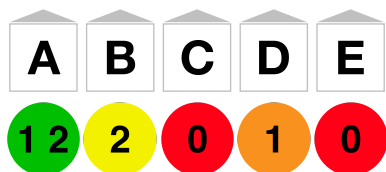


A Minor



Skill Check

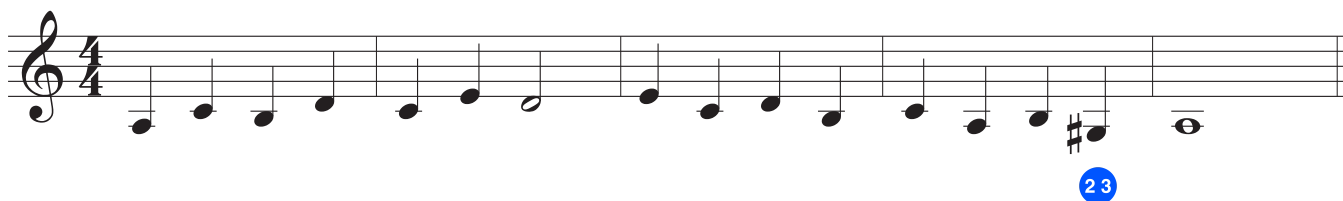
- Scale
- Exercise 1
- Exercise 2
- Exercise 3
- Scale Memorized

Scale



Technique Exercises

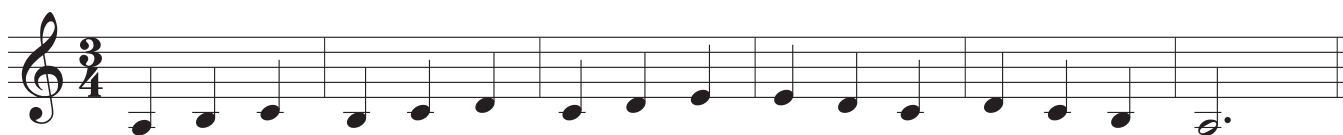
Exercise 1



Exercise 2



Exercise 3



Etudes

Etude 1

Etude 1 musical notation, consisting of three staves in 4/4 time. The first staff starts with a treble clef and a 4/4 time signature. The melody consists of quarter notes: G4, A4, B4, C5, D5, E5, F5, G5, A5, B5, C6, D6, E6, F6, G6, A6, B6, C7. The second staff continues the melody with quarter notes: D6, E6, F6, G6, A6, B6, C7, D7, E7, F7, G7, A7, B7, C8, D8, E8, F8, G8, A8, B8, C9. The third staff continues with quarter notes: D8, E8, F8, G8, A8, B8, C9, D9, E9, F9, G9, A9, B9, C10, D10, E10, F10, G10, A10, B10, C11, ending with a double bar line.

Etude 2

Etude 2 musical notation, consisting of three staves in 4/4 time. The first staff starts with a treble clef and a 4/4 time signature. The melody consists of quarter notes: G4, A4, B4, C5, D5, E5, F5, G5, A5, B5, C6, D6, E6, F6, G6, A6, B6, C7. The second staff continues the melody with quarter notes: D6, E6, F6, G6, A6, B6, C7, D7, E7, F7, G7, A7, B7, C8, D8, E8, F8, G8, A8, B8, C9. The third staff continues with quarter notes: D8, E8, F8, G8, A8, B8, C9, D9, E9, F9, G9, A9, B9, C10, D10, E10, F10, G10, A10, B10, C11, ending with a double bar line.