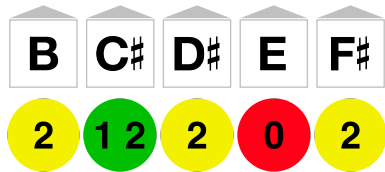


# B Major



## Skill Check

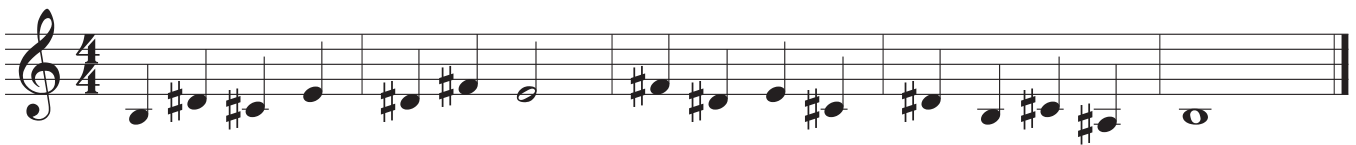
- Scale
- Exercise 1
- Exercise 2
- Exercise 3
- Scale Memorized

## Scale



## Technique Exercises

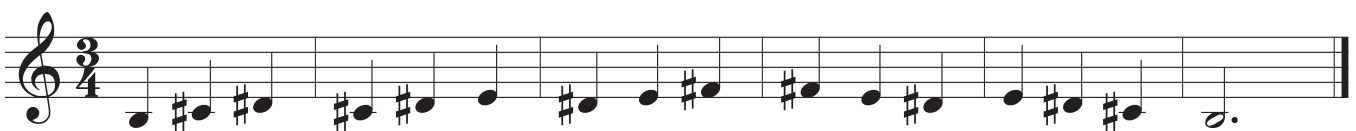
### Exercise 1



### Exercise 2



### Exercise 3



# Etudes

## Etude 1

Etude 1 is written in 3/4 time and consists of three staves of music. The first staff begins with a treble clef and a 3/4 time signature. The melody consists of eighth and quarter notes with various accidentals (sharps and naturals). The second staff continues the melody with similar rhythmic patterns and accidentals. The third staff concludes the piece with a final cadence, including a double bar line and repeat dots.

## Etude 2

Etude 2 is written in 4/4 time and consists of three staves of music. The first staff begins with a treble clef and a 4/4 time signature. The melody is characterized by eighth-note pairs beamed together, often with slurs, and includes various accidentals. The second staff continues this pattern. The third staff concludes the piece with a final cadence, including a double bar line and repeat dots.