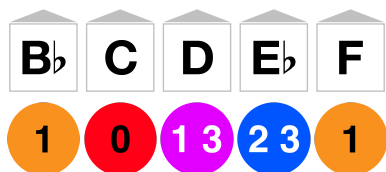


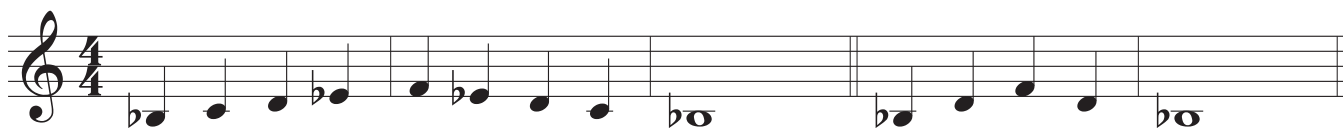
# B $\flat$ Major



## Skill Check

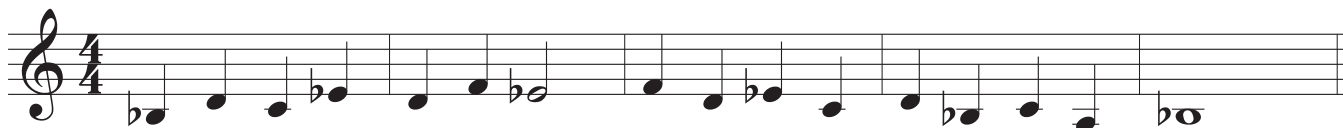
- Scale
- Exercise 1
- Exercise 2
- Exercise 3
- Scale Memorized

## Scale



## Technique Exercises

### Exercise 1



### Exercise 2



### Exercise 3



## Etudes

### Etude 1

Etude 1 is a three-staff musical exercise in 4/4 time, written in B $\flat$  Major. The first staff begins with a treble clef and a 4/4 time signature. The melody consists of quarter and eighth notes, with a key signature of one flat (B $\flat$ ). The second staff continues the melody with similar rhythmic patterns. The third staff concludes the piece with a final cadence, marked by a double bar line and repeat dots.

### Etude 2

Etude 2 is a three-staff musical exercise in 4/4 time, written in B $\flat$  Major. The first staff begins with a treble clef and a 4/4 time signature. The melody features eighth-note pairs with slurs, indicating a steady eighth-note rhythm. The second and third staves continue this rhythmic pattern throughout the piece, ending with a final cadence.