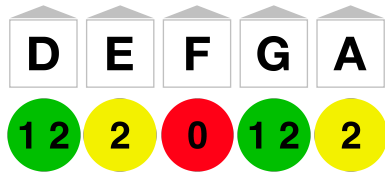


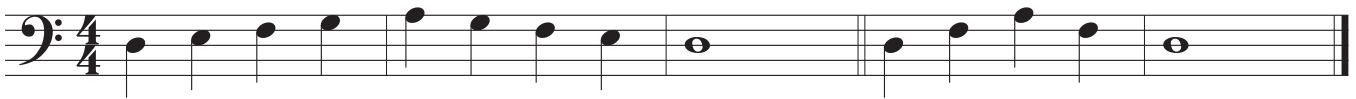
D Minor



Skill Check

- Scale
- Exercise 1
- Exercise 2
- Exercise 3
- Scale Memorized

Scale



Technique Exercises

Exercise 1



Exercise 2



Exercise 3



Etudes

Etude 1

Etude 1 musical notation, consisting of three staves of bass clef music in 4/4 time. The first staff begins with a treble clef and a 4/4 time signature. The music consists of eighth and sixteenth note patterns across four measures on each staff.

Etude 2*

Etude 2* musical notation, consisting of three staves of bass clef music in 4/4 time. The first staff has a first ending bracket over the first measure. The second staff has a second ending bracket over the last two measures. The music features a mix of eighth, sixteenth, and quarter notes.



*Etude 2 can be played as a canon.