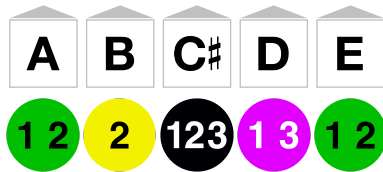


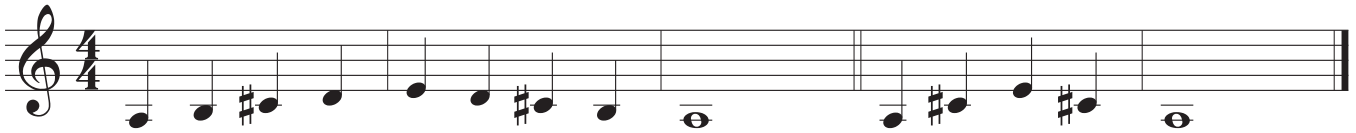
# A Major



## Skill Check

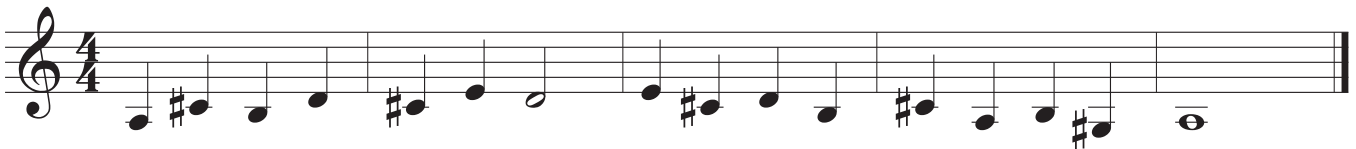
- Scale
- Exercise 1
- Exercise 2
- Exercise 3
- Scale Memorized

## Scale



## Technique Exercises

### Exercise 1



### Exercise 2



### Exercise 3



# Etudes

## Etude 1

Etude 1 is written in 4/4 time and consists of three staves. The first staff begins with a treble clef and a 4/4 time signature. The melody starts with a quarter rest, followed by quarter notes C4, D4, E4, and F4. The second measure contains a quarter rest, a quarter note G4 with a sharp sign, a quarter note A4, and a quarter note B4. The third measure contains a quarter note C5, a quarter note B4, a quarter note A4, and a quarter note G4. The fourth measure contains a quarter note F4, a quarter note E4, a quarter note D4, and a quarter note C4. The second staff continues the melody with a quarter note D4, a quarter note E4, a quarter note F4, and a quarter note G4. The third measure contains a quarter note A4, a quarter note B4, a quarter note C5, and a quarter note B4. The fourth measure contains a quarter note A4, a quarter note G4, a quarter note F4, and a quarter note E4. The third staff concludes the piece with a quarter note D4, a quarter note C4, a quarter note B3, and a quarter note A3, ending with a double bar line.

## Etude 2

Etude 2 is written in 4/4 time and consists of three staves. The first staff begins with a treble clef and a 4/4 time signature. The melody starts with a quarter note G4 with a sharp sign, a quarter note A4, a quarter note B4, and a quarter note C5. The second measure contains a quarter note B4, a quarter note A4, a quarter note G4, and a quarter note F4. The third measure contains a quarter note E4, a quarter note D4, a quarter note C4, and a quarter note B3. The fourth measure contains a quarter note A3, a quarter note G3, a quarter note F3, and a quarter note E3. The second staff continues the melody with a quarter note D3, a quarter note C3, a quarter note B2, and a quarter note A2. The third measure contains a quarter note G2, a quarter note F2, a quarter note E2, and a quarter note D2. The fourth measure contains a quarter note C2, a quarter note B1, a quarter note A1, and a quarter note G1. The third staff concludes the piece with a quarter note F1, a quarter note E1, a quarter note D1, and a quarter note C1, ending with a double bar line.